

KĀNEIOLOUMA



A Presentation by Hui Mālama O Kāneiolouma

Rupert Rowe, President and Po'o

June, 2012

2.

Hui Mālama O Kāneiolouma June 2012

KAHUA O KĀNEIOLOUMA



Po'ipu Beach Park

Kahua O Kāneiolouma

Kāneiolouma: "Kāne who drove and pushed"
Kahua: "Site", also "Stage"

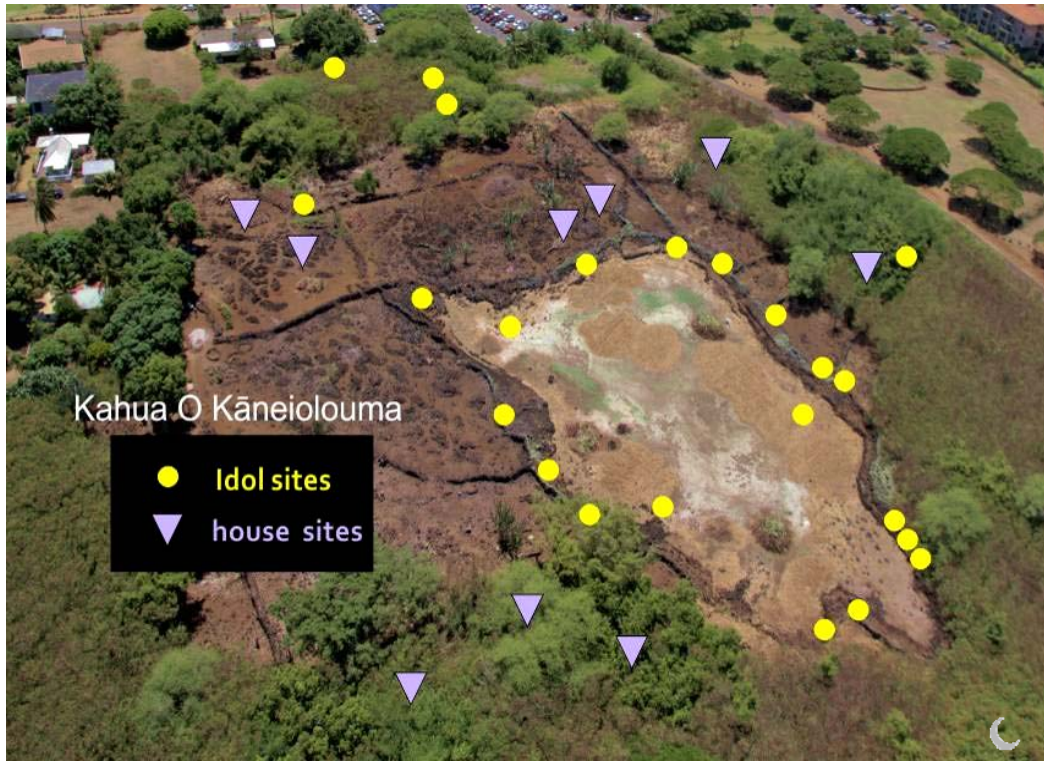
Kāneiolouma is:

- △ Sacred to the Hawaiian culture
- △ An important historical landmark for all of Kaua'i.

3.

Hui Mālama O Kāneiolouma June 2012

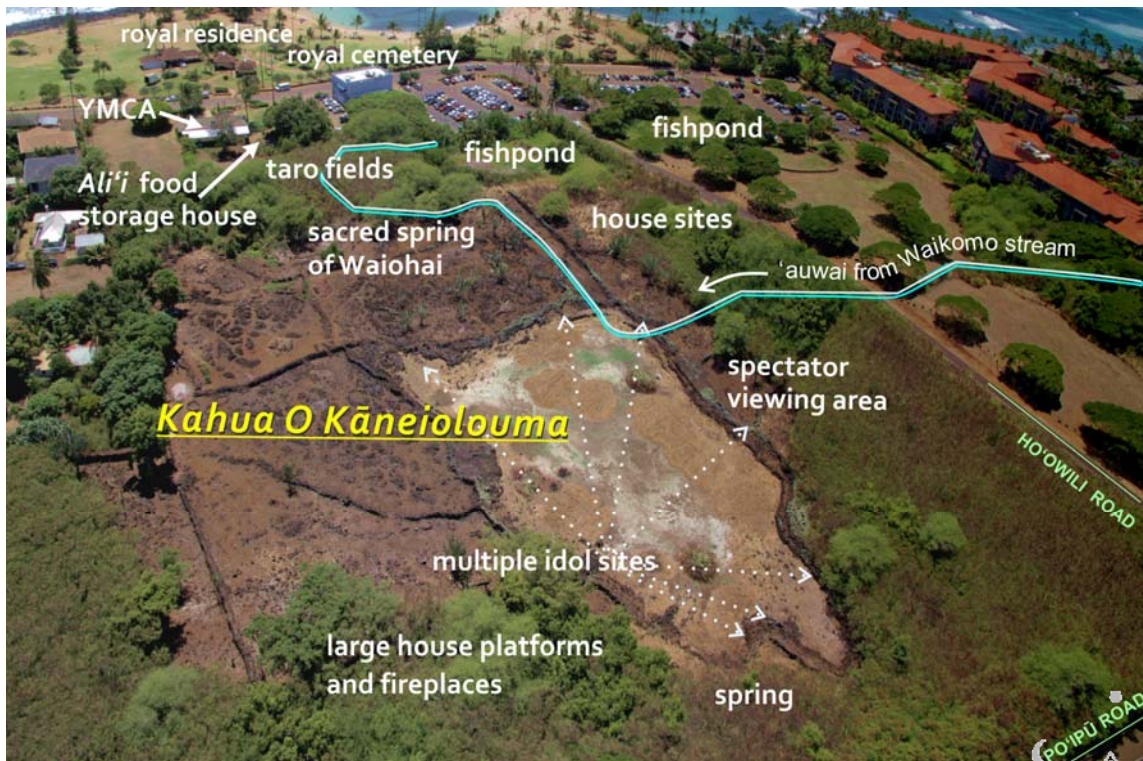
A Sacred Site



4.

Hui Mālama O Kāneiolouma June 2012

An Ancient Village



5.

Hui Mālama O Kāneiolouma June 2012

**Well-preserved walls, terraces, altars, idol sites, artifacts
trace the architecture of ancient life**



6.

Hui Mālama O Kāneiolouma June 2012

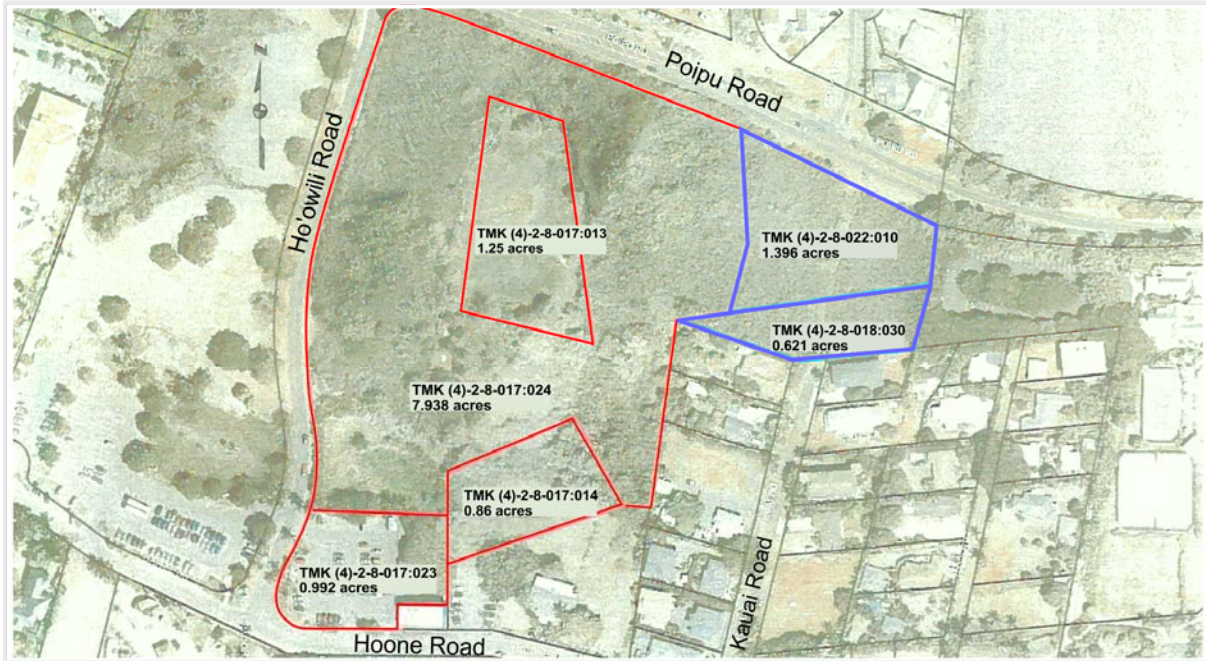
BACKGROUND



7.

Hui Mālama O Kāneiolouma June 2012

“Po’ipū Beach Mauka Preserve” County Parcels and Added State Parcels



Legend ▭ Kāneiolouma preserve
▭ State land addition

Scale 1:1500
0 80 160 320 480 640 feet

8.

Hui Mālama O Kāneiolouma June 2012

Hui Mālama O Kāneiolouma



- △ Non-profit group has unofficially cared for the site for over 10 years.
- △ Formal Stewardship Agreement signed with the County in 2010.

9.

Hui Mālama O Kāneiolouma June 2012

Mission



"To perpetuate the Hawaiian culture by preserving, protecting, and rehabilitating the Kāneiolouma complex, and to provide cultural education by perpetuating the Hawaiian cultural traditions practiced at southern Kōloa."

10.

Hui Mālama O Kāneiolouma June 2012



Work to Date



△ 2010

Volunteer work hours
logged: **1,378**

△ 2011 thru Nov 30

volunteer work hours
logged: **1,667**

△ Clearing, cleaning,
removing invasive
vegetation.

11.

Hui Mālama O Kāneiolouma June 2012



Work to Date



12.

Hui Mālama O Kāneiolouma June 2012

Clearing to Date



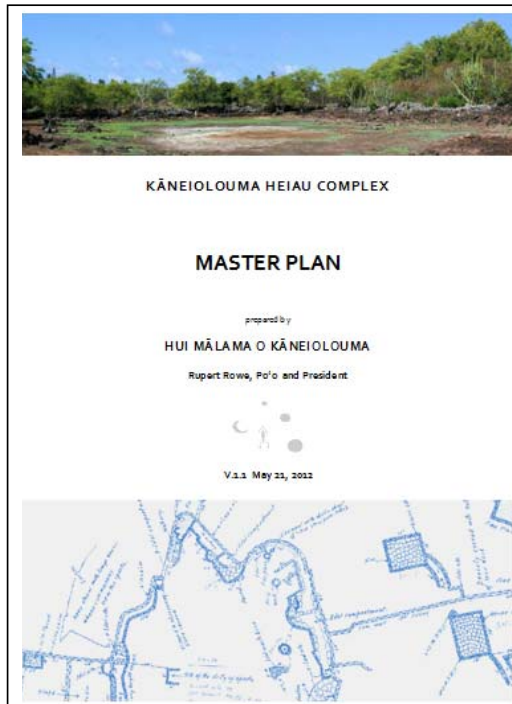
December
2008



September
2011

12

Master Plan



- △ Just released nationwide for review.
- △ Describes vision and work plan for Kāneiolouma.
- △ Online at www.kaneiolouma.org

14.

Hui Mālama O Kāneiolouma June 2012

Goals

~ To preserve in perpetuity for all people the sacred site at Kaneiolouma ~

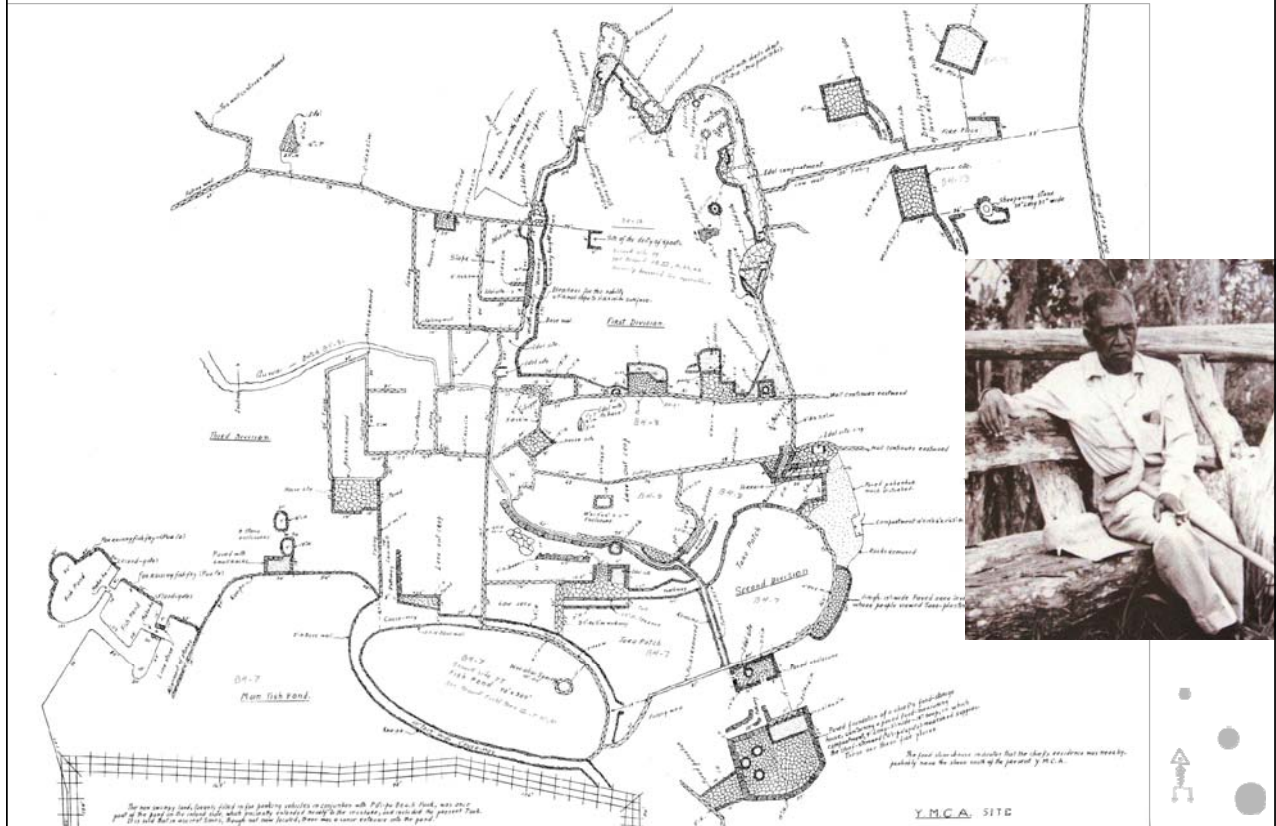


- △ Preserve and perpetuate Hawaiian culture through protection and restoration of *Kahua O Kāneiolouma*.
- △ Honor and respect the sacred places of *Kāneiolouma* while enhancing educational and recreational opportunities at Po'ipū.
- △ Provide a living link to Hawaiian traditions and heritage through expanded knowledge and experience of cultural practices.

15.

Hui Mālama O Kāneiolouma June 2012

The Blueprint: from Henry Kekahuna “A Genuine Hawaiian Village”



Objectives

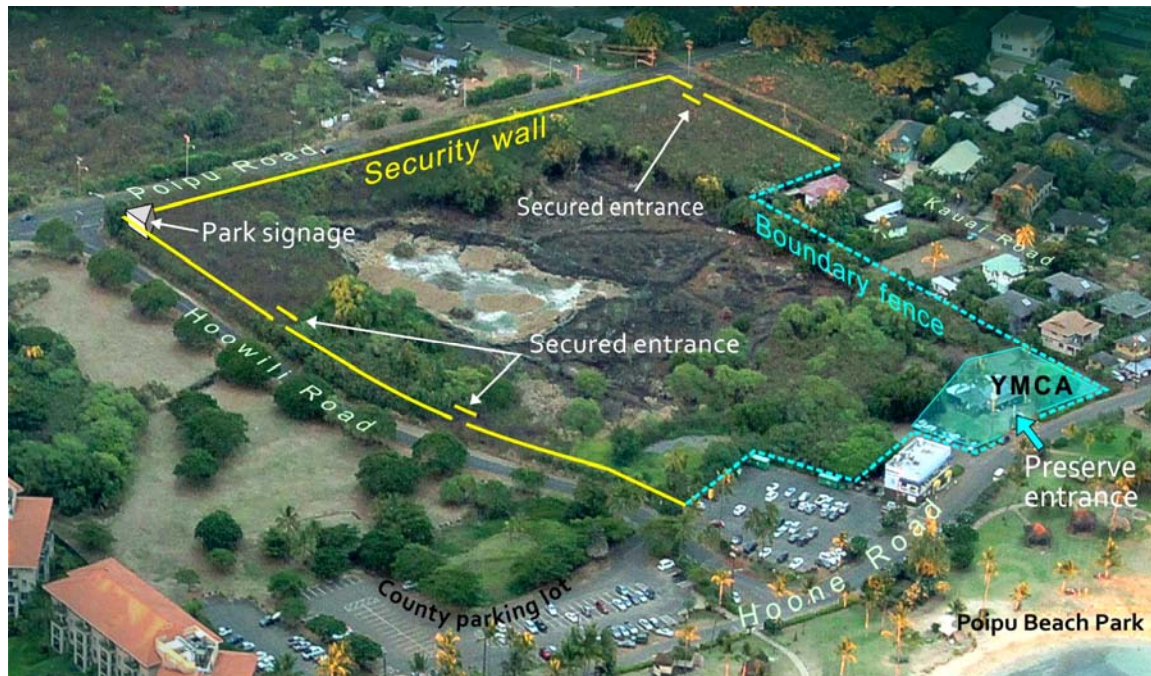
1. Establish and maintain site security.
2. Prevent further degradation.
3. Clear invasive overgrowth.
4. Reestablish appropriate native vegetation.
5. Restore or rebuild rock walls and terraces.
6. Restore fish ponds and selected cultivation areas.
7. Restore selected habitation areas.
8. Create informative interpretive signage.
9. Create an interpretive visitor center.
10. Open the site to the public.
11. Maximize access while safeguarding respect for sacred areas.
12. Integrate as part of the visitor experience at Po'ipū Beach Park.
13. Showcase local history and traditional Hawaiian art forms.
14. Provide valuable educational opportunities for students and visitors; ensure a cultural experience that is respectful and accurate.
15. Serve as venue for local cultural activities.

Highest Priority Tasks

- △ Security wall around perimeter.
- △ Acquisition of adjacent parcel for Interpretive Center.
- △ Rock wall repair.
- △ Removal of hurricane debris.
- △ Clearing of invasives and replanting with native vegetation.



Security Wall



Nukumoi



- △ Zoning is
**OPEN
PUBLIC
CULTURE**
- △ Contains loi kalo, cooking platforms, and idol sites.
- △ Essential site for Preserve entrance.
- △ Ideal location for Interpretive Center.

20.

Hui Mālama O Kāneiolouma June 2012



Rock Wall Repair



- △ Work and protocol led by six cultural stone masons.
- △ Supported by volunteer work teams, with assistance from County Work Service.
- △ Two year project.

21.

Hui Mālama O Kāneiolouma June 2012



Phasing

Phase I:
(one year time-frame)

- o Perimeter security wall and protective signage.
- o Adjacent parcel acquisition.
- o Removal of hurricane debris.
- o 3-D site survey and documentation.
- o Assembly of cultural stone masons and volunteers.

Phase II:
(three year time-frame)

- o Rock wall restoration.
- o Drainage plan and flood mitigation.
- o Interpretive signage development.
- o Traffic plan.

Phase III:
(five year time-frame)

- o Fishpond restoration.
- o Taro field restoration.
- o Selected house site restoration.
- o Pathways and viewing points.
- o Grounds open to public.

Phase IV:
(seven year time-frame)

- o Interpretive center construction/remodel.
- o Interpretive displays install.
- o Facilities integration with Po'ipū Beach Park.
- o Cultural activities begin.
- o Interpretive visitor center open to public.



Major Funding Requests, years 1-3

Security wall	\$706 K
Rock wall repairs	\$600 K
Nukumoi purchase	\$TBD
Surveying	\$50 K
Signage	\$50 K
Admin & operations	\$40 K / yr



Other Requests

Assistance with:

- ⚠️ Hauling of larger cleared trees.
- ⚠️ Bull-dozed hurricane debris removal.
- ⚠️ Flood mitigation.

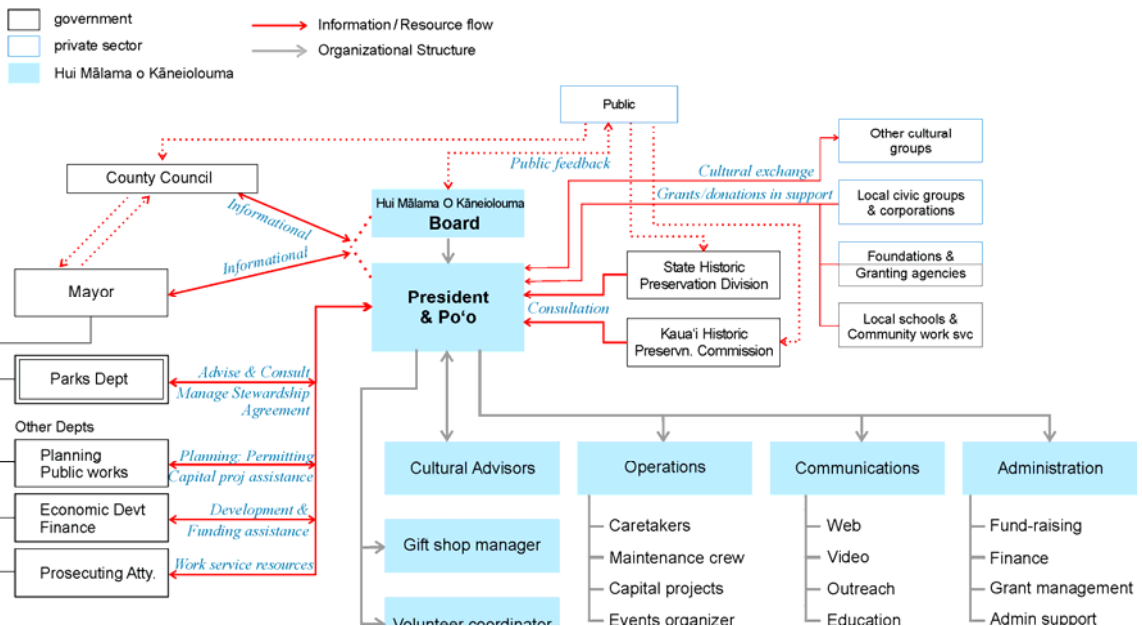


24.

Hui Mālama O Kāneiolouma June 2012

Organizational Structure

Kāneiolouma Project Organization



25.

Hui Mālama O Kāneiolouma June 2012

Guiding Principles for the Project

- △ All actions are grounded in respect for Hawaiian culture and its traditions, language, and life in balance with the land.
- △ All restoration is strictly authentic and performed in accord with ancient protocols.
- △ To the greatest degree possible, a Hawaiian atmosphere prevails. That means no metal or anything that did not exist in ancient Hawaii. Use only native Hawaiian and traditional Polynesian plants.
- △ Care of the site is paramount. Work vigilantly to prevent damage or deterioration.
- △ This is a cultural ceremonial preserve. Dance and sports have a place, Island champions are determined. *Kāneiolouma* can resume a traditional role in hosting larger groups and inter-island visitors for *Makahiki* ceremonies.
- △ Cultural experts are engaged to ensure correct protocols are followed.
- △ Community participation and volunteers are involved to share in the experience of restoring *Kāneiolouma*.
- △ The site is preserved for the access and benefit of all peoples.

Under the terms of the Stewardship agreement, all work is subject to approval by the County, in consultation where appropriate with Kauaʻi Historic Preservation Review Commission and the state Department of Land and Natural Resources State Historic Preservation Division.



*“The Past becomes the Future,
and the Future
becomes the Present.”*

- Rupert Rowe

Mahalo and Mālama Pono



28.

Hui Mālama O Kāneiolouma June 2012